

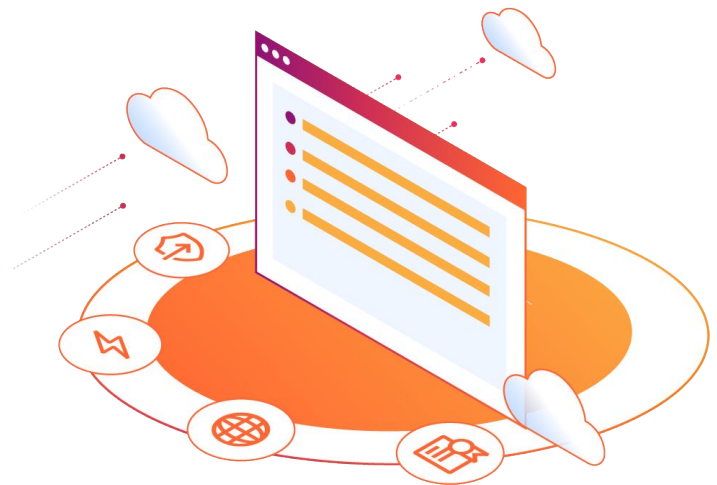
# Migrate from Akamai to Cloudflare

Supercharge Your Application and Web Performance

## Akamai to Cloudflare Product and Feature Mapping

The first step in considering a migration is to understand how the services that Cloudflare offers map to legacy Akamai services.

To make the migration process simpler, our experts have developed the following cheat sheet with descriptions of basic Akamai concepts and terminology and how they map to Cloudflare's modern solutions.



### Basic Akamai Terminology

| Akamai Terminology            | Description   | Cloudflare Equivalent                |
|-------------------------------|---|--------------------------------------|
| Akamai Control Center         | The main portal where you create configurations.                                      | <a href="#">Cloudflare Dashboard</a> |
| Property Manager / Properties | Application that lets you create different CDN configurations.                        | <a href="#">Account / Zones</a>      |
| Edge Hostname                 | Hostname to be used to create CNAME records to point traffic to the vendor's network. | <a href="#">Cloudflare Hostname</a>  |
| Variables                     | Variables that can be used to manipulate traffic and create rules.                    | <a href="#">Fields</a>               |

| Akamai Product Mappings   |  |                                    |
|---------------------------|--|------------------------------------|
| Akamai Product            | Description  | Cloudflare Equivalent              |
| Edge DNS                  | Authoritative DNS service.   | <a href="#">Cloudflare DNS</a>     |
| Sureroute                 | Dynamic content delivery optimization.   | <a href="#">Argo Smart Routing</a> |
| Enhanced Akamai Protocol  | Routing and transport optimization to boost performance.   | <a href="#">Argo Smart Routing</a> |
| Site Shield               | Protection against direct attacks on origins by removing them from the public IP address space.      | <a href="#">Basic CDN</a>          |
| Dynamic Page Caching      | Dynamic page caching, done by modifying cache keys to cache pages based on cookies or query strings. | <a href="#">Cache Key Rewrite</a>  |
| NetStorage                | Object storage, hosting static content, hosting failover/maintenance pages.                          | <a href="#">R2</a>                 |
| Cloud Wrapper             | Origin shield to improve cache hit ratios and reduce public cloud egress fees.                       | <a href="#">Cache Reserve</a>      |
| Application Load Balancer | Application load balancing.  | <a href="#">Load Balancing</a>     |
| EdgeWorkers               | Distributed, serverless edge platform.   | <a href="#">Workers</a>            |

## Ready to Move to Cloudflare?

Cloudflare experts make migrations quick with minimal disruption and maximum benefit

Are you frustrated with Akamai but are held back from moving due to the unknowns of the migration process? Cloudflare technical teams migrate customers daily.

Our Migration-as-a-Service offering includes experienced delivery, architectural and engineering resources ready to work with you or your partners to execute a seamless migration and minimize the level-of-effort for busy IT teams.

Get Started With Our Migrations Assessment

<https://www.cloudflare.com/lp/migrations-assessment/>