

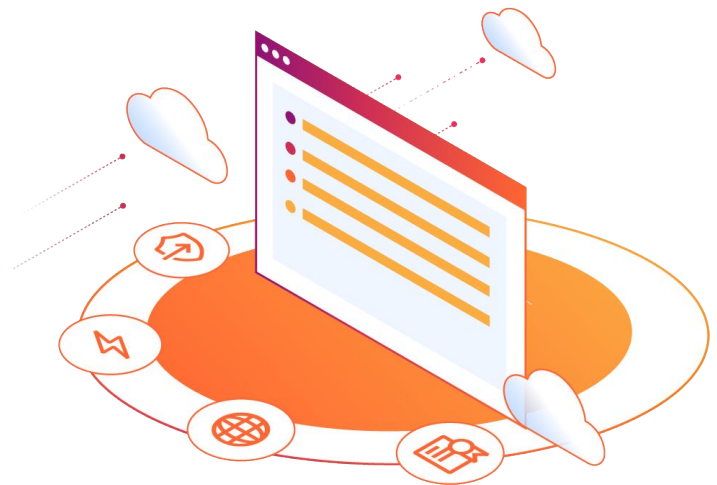
Migrate from Fastly to Cloudflare

Supercharge Your Application and Web Performance

Fastly to Cloudflare Product and Feature Mapping

The first step in considering a migration is to understand how the services that Cloudflare offers map to existing Fastly services.

To make the migration process simpler, our experts have developed the following cheat sheet with descriptions of basic Fastly concepts and terminology and how they map to Cloudflare's modern solutions.



Basic Fastly Terminology		
Fastly Terminology	Description	Cloudflare Equivalent
Deliver Page	The web UI where you create configurations.	Cloudflare Dashboard
Delivery Services	A service that is intended to interact with the CDN.	Account / Zones
Hosts / Backends	Hostname to be used to create CNAME records to point traffic to the vendor's network.	DNS Records
Shielding	Delegation of PoP (Points of Presence) tiers.	Tiered Cache

Fastly VCL

Many organizations are reluctant to migrate from Fastly to any other vendor due to their reliance on VCL. While VCL migrations can seem intimidating at first, our team of experts make VCL configuration mapping over to Cloudflare easier.

Fastly VCL Quick Reference	
Fastly VCL Reference	Description
Subroutines and VCL Lifecycle	<p>Unique to Varnish, subroutines are event hooks that are invoked at every phase of the request lifecycle.</p> <p>Commonly used subroutines include:</p> <ul style="list-style-type: none"> • Client to CDN (vcl_recv) • CDN Cache Hit (vcl_hit) • CDN Cache Miss (vcl_miss) • CDN to Origin (vcl_pass and vcl_fetch) • CDN to Client (vcl_deliver)
req	Incoming request object from client. It includes headers, body, and other request properties.
bereq	Requests sent from the proxy to the origin server. These are modified requests that are fetched from the origin.
resp	Response object copy that is sent to the client.
beresp	Response from the origin.
obj	Object retrieved from the cache.
acl	Access control lists. These are created in VCL blocks and can be referenced within any snippet.
restart	Restart statements can be triggered at any given time within a subroutine, restarting the LoAR from vcl_recv.
synthetic	Common statement that returns random text, capable of returning HTML or JSON. Comparable to Cloudflare's Custom Error Responses .
Surrogate-Key	An HTTP header that Fastly references when purging the cache. Comparable to Cloudflare Cache Tags .
table	Simple object-based lookup table that VCLs can use to find <i>key:value</i> pairs.

Fastly Product Mappings		
Fastly Product	Description	Cloudflare Equivalent
CDN	Global content delivery network.	Cache / CDN
Platform TLS	Manage certificates and keys for TLS.	SSL/TLS
DDoS Protection and Mitigation Service	Protection against multi-vector DDoS attacks	DDoS Protection
Next-Gen WAF (Signal Sciences)	Web application firewall to protect against modern attacks targeting applications and origin servers.	WAF
Nearline Cache	Origin shield to improve cache hit ratios and reduce public cloud egress fees.	Cache Reserve
Origin Connect	Physical Network Interconnect (PNI) to connect to the vendor's infrastructure directly rather than using the public Internet.	CNI
Compute Services and Compute@Edge	Distributed, serverless edge compute platform.	Workers and Wrangler CLI
Observability / Logs Streaming	Analytics and Log delivery into SIEMs.	Logpush and Logpull
Edge Data Storage	Simple global data storage.	Workers KV

Ready to Move to Cloudflare?

Cloudflare experts make migrations quick with minimal disruption and maximum benefit

Are you frustrated with Fastly but are held back from moving due to the unknowns of the migration process? Cloudflare technical teams migrate customers daily.

Our Migration-as-a-Service offering includes experienced delivery, architectural and engineering resources ready to work with you or your partners to execute a seamless migration and minimize the level-of-effort for busy IT teams.

Get Started With Our Migrations Assessment

<https://www.cloudflare.com/lp/migrations-assessment/>