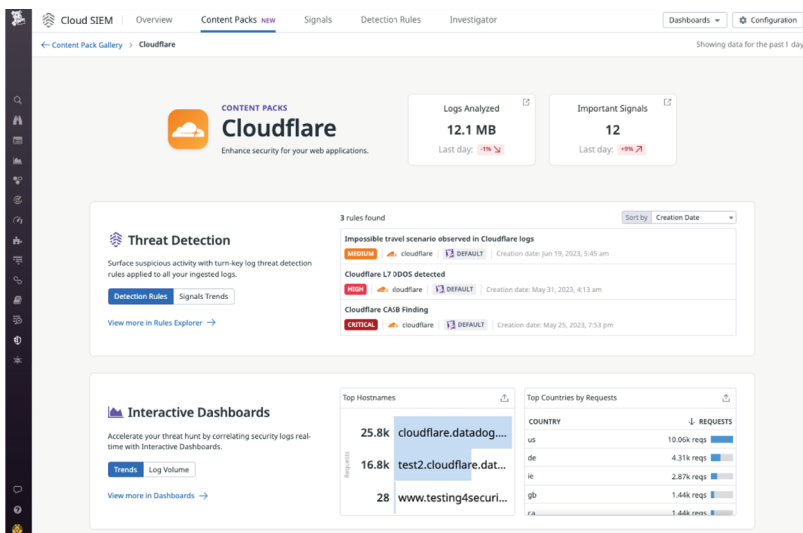


# Datadog & Cloudflare: Expanded monitoring with single-pane-of-glass management

Datadog and Cloudflare’s deep technology integration funnels security and performance insights from Cloudflare directly to Datadog. Easily analyze events and trends from your website and applications in context across your entire technology stack, enabling your team to respond to any issues more quickly and to ensure compelling, secure online experiences for your customers.

The integration is based on Cloudflare’s Analytics API and LogPush is available in the Datadog Integrations Catalog. Find more information on Datadog’s website at: <https://bit.ly/2Ey3gOG>.



## Step 1

Install the Cloudflare Integration via Datadog’s Integrations Catalog



## Step 2

Enter your Cloudflare account information and API key



## Step 3

Monitor your websites and set up alerts for specific events



## Cloudflare Dashboard

Monitor your websites using the pre-built dashboard or customize your own



## Monitoring and Alerting

Use Datadog’s monitoring and alerting features to alert you on events you specify



## Complete Visibility

Datadog ingests the full scope of Cloudflare logs



## Easy Setup

Add your Cloudflare account information and API key in Datadog to get started